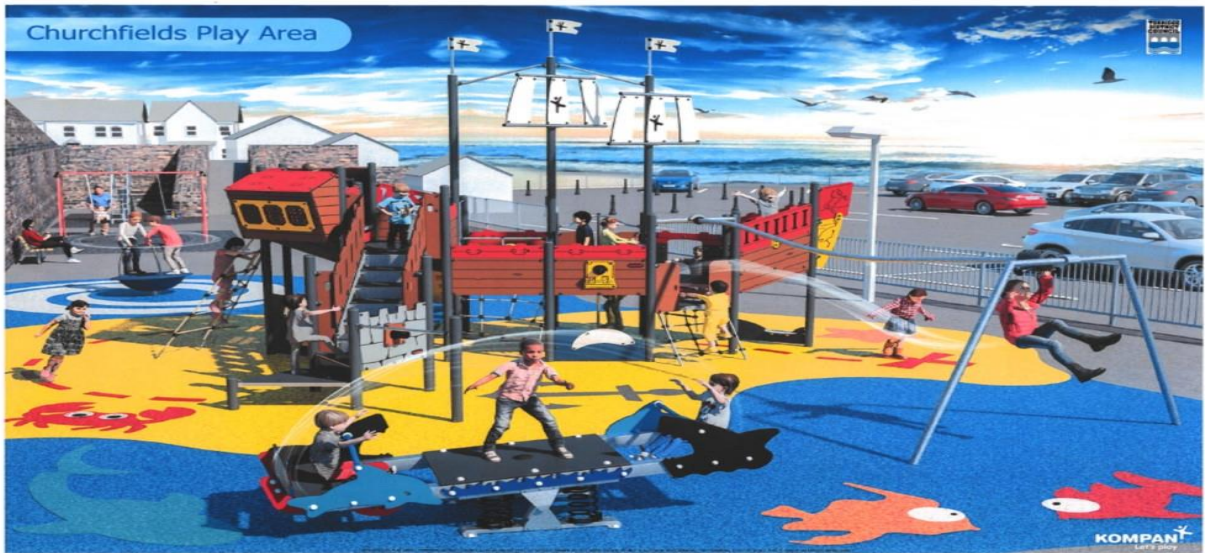


Torridge Play Area Strategy 2021





Foreword

“When I first became a councillor, one of my priorities for my ward of Great Torrington was to improve the town’s main play area. At the time I was a supply teacher at Great Torrington School and so I had the opportunity to speak to the students about issues in the town: the things they liked, the things didn’t like and what they would do to make the town better. They had lots of interesting ideas and one thing which came up every single time was to improve the park! Some of the children were simply asking for the swings to be put back in as they had been removed and not replaced. I found it very sad that these children were lacking something so simple as a set of swings in their main play area. It was made clear to me just how important these spaces are for our communities and I made it my mission to try and make it better.

This strategy recognises that play areas are important; and indeed under the UN convention on the rights of the child, children have the right to play, recreation and culture. Play is essential for many aspects of children’s development. However, it’s not only important for children, but for families and social cohesion as a whole. Play areas are spaces for people from all backgrounds to meet, play, enjoy, and get to know one another in a fun and safe environment. They are free to use and should be accessible to all.

Formal research recognises the value of high-quality play areas and public spaces, not only in terms of community well-being, but also the economic benefits it can bring. They say that shabby, badly maintained public spaces only worsen the sense of physical and social decline in an area. However, high-quality, well-designed spaces attract customers, employees and services, and in town centres increases the number of people visiting retail areas. Therefore, we can see that the regeneration of these often neglected spaces will bring hope to our communities and attract people to visit and live in the local area, thus having a positive knock-on effect on the local economy.

This play strategy emphasises the need for the council to work together with our communities, which I believe is a vitally important component if we are to reach our goals. We need to give ownership back to the people who use these spaces, give them pride in what has been achieved and respect for the transformed play spaces that they have and will continue to help design and create.

It is clear that quality play spaces are fundamental in helping to improve and encourage healthy lifestyles and prevent antisocial behaviour. Throughout the coronavirus pandemic, these spaces have proved to be more important than ever before, providing places for children and families to get outside and be active. When many other forms of entertainment and leisure were closed throughout various lockdowns, play areas often remained open as essential spaces for people to enjoy, improving emotional health and wellbeing for both children and their families during extremely difficult times.

I am so pleased that through this play area strategy, the council now formally recognises the importance of these spaces in our communities. I fully support the contents of the strategy and the aspirations to have all of our current play areas made “good” by 2023, and “excellent” by 2031, and would like to thank Torrington District Council’s Community Engagement Officer, Adrian Avery, for his hard work in putting the 2021 Play Area Strategy together.”

Councillor Cheryl Cottle-Hunkin
Lead Member for Community, Culture and Leisure

Contents

Section 1

Introduction - This strategy aims to outline why it is important for Torridge District Council to have a play strategy, the definition of play, children's right to play, the National Play Strategy, embedding the Play Strategy and also how this strategy links to other Torridge District Council strategies (playing pitch strategy, Green Infrastructure Strategy).

Section 2

Update on Torridge District Council's Play Strategy

Torridge District Council Current Provision
Audit of Existing Open Space Assets

Financials

Capital Investments
Funding Streams
Grant Funding

Section 3 – What Torridge District Council aims to do

Policy & Strategy – The Way Forward
TDC Mission statement
What will Torridge District Council do now?
The 2020 Lockdown effect

Section 1

Introduction

Why is it important to have a Play Area Strategy?

This strategy has been compiled to enable our young people to be able to enjoy safe play now and into the future. Although the provision of Play Areas is not a statutory part of the council's functions, Torridge District Council recognises their importance for physical and mental wellbeing. As such, this strategy seeks to develop and maintain a standard so that our young people can enjoy safe play.

Play is an important part of a child's life.

Torridge District Council recognises how important children's play is for their physical, mental and social development. It allows them to burn off built up energy but also to build relationships with friends and other young people away from the structured learning often given by the adults in their lives.

Defining play

Play England's *Charter for Children's Play* describes play as: 'what children and young people do when they follow their own ideas and interests, in their own way, and for their own reasons.'

Play has also frequently been described as 'what children and young people do when they are not being told what to do by adults.'

Having time and space to play gives children the opportunity to meet and socialise with their friends, keeps them physically active, and gives the freedom to choose what they want to do.

Research shows that play has many benefits for children, families and the wider community, as well as improving health and quality of life. Recent research suggests that children's access to good play provision can:

- increase their self-awareness, self-esteem, and self-respect
- improve and maintain their physical and mental health
- give them the opportunity to mix with other children
- allow them to increase their confidence through developing new skills
- promote their imagination, independence and creativity
- offer opportunities for children of all abilities and backgrounds to play together
- provide opportunities for developing social skills and learning
- build resilience through risk taking and challenge, problem solving, and dealing with new and novel situations
- provide opportunities to learn about their environment and the wider community.

Evidence is also available that outlines wider benefits of play provision for families and communities, suggesting that:

- parents can feel more secure knowing that their children are happy, safe and enjoying themselves
- families benefit from healthier, happier children

- buildings and facilities used by play services are frequently seen as a focal point for communities
- it offers opportunities for social interaction for the wider community and supports the development of a greater sense of community spirit, promoting social cohesion
- public outside spaces have an important role in the everyday lives of children and young people, especially as a place for meeting friends
- parks and other green spaces are popular with adults taking young children out to play and for older children and young people to spend time together.

Children's right to play

The right to play and informal recreation, for all children and young people up to 18 years of age, is contained in Article 31 of the UN Convention on the Rights of the Child, ratified by the UK government in 1991. The government has a duty under this convention to protect and promote play opportunities for all children and young people.

Playgrounds within facilities which have been registered under the Act's requirements need to be safe and suitable for their purpose and meet relevant standards.

National strategy

In 2008, the first national Play Strategy set out the last government's vision and commitments for better play opportunities in England. As well as focusing on the specific places where children play, like parks and green spaces, schools and children's centres, the Play Strategy also considers how communities and neighbourhoods can become more child-friendly overall. The Play Strategy was published by the then Department for Children, Schools and Families.

Charter for Children's Play

Posted on *January 23, 2009* by *Play England*

The Charter for Children's Play sets out a vision for play. It aims to be a catalyst for individuals and organisations to examine and improve how they provide for children and young people's play and informal recreation.

The Charter sets out the abiding principles on which the play sector is founded and signing up to the Charter is a pre-requisite for all Play England members and staff.

The Charter states:

- Children have the right to play
- Every child needs time and space to play
- Adults should let children play
- Children should be able to play freely in their local areas
- Children value and benefit from staffed play provision
- Children's play is enriched by skilled playworkers
- Children need time and space to play at school
- Children sometimes need extra support to enjoy their right to play

These statements shape the way Play England works, the projects we invest in, the campaigns we support – ours and others – and help us focus on the issues that matter.

Embedding the Play Strategy

In 2010 the last government published non-statutory guidance to assist local authorities and their partners in the planning needed to improve local play offers. The publication was designed to help local decision makers put children's play at the heart of their local communities. It shows how planning and investing in local play space – and considering children's needs within the wider environment – can benefit children, families and whole communities.

The guidance is based on the publication of the same name, which Play England wrote and submitted to government following an open consultation in October 2009. Play England encouraged all agencies and professionals with a role in delivering the Play Strategy to respond.

Linking local plans and current strategies

It is important that we recognise that this work, although created by Torridge District Council, is part of a wider plan. To do this successfully, we must incorporate the experience of other agencies and partners.

Torridge District Council, in collaboration with North Devon District Council, has already created a Green Infrastructure Strategy (2013-2031) which concentrates on all the open spaces within the Torridge area. See appendix 1

Research carried out to create the above strategy for 2013 – 2031 found the below action for play areas in Torridge is required;

- Increase provision in areas that highlight a need for increased provision
- Incorporate facilities for young adults/ teenagers in new provision.

The report also suggested that the main implications for deriving access standards are that walk times would be most appropriate for:

- Parks and gardens
- Natural areas
- Amenity areas
- **Play areas for children**
- Teenage facilities
- Allotments
- Civic spaces
- Grass pitches
- Tennis courts
- Green corridors

In collaboration with North Devon District Council, there is a Playing Pitch Strategy (2017) which concentrates solely on what sports pitches there are in the area and how they will be monitored and developed over time. See appendix 2

Torridge District Council will also follow guidance from the national Friends of the Earth policy (appendix 4.0). This recognises the importance of Green Space within our communities and created England wide analysis to show correlation between green space deprivation, income and race. The policy identifies the priority neighbourhoods most in need of green space investment if people in every part of the country are to enjoy and benefit from the multiple roles green space provide.

Section 2

Torrige Play Areas – Current Provision

Background

Torrige District Council are responsible for the maintenance of 36 key sites within the district, although not all of them are owned by Torrige.

Historically, some play areas have been handed over to Parish or other District Councils, or as a result of section 106 requirements have been developed or handed over to developers/Housing Associations under financial arrangements.

Surveying sites took place from July to September 2019 and reflects the status of the sites at that time. Any subsequent damage, repairs or replacements which arise after that date will not be reflected in this report.

Play condition survey Full report – appendix 3.1

All sites have been surveyed and the equipment available for use has been documented. In some cases, all equipment is available for use, in others a significant amount of equipment is isolated or has been removed and not replaced. On some sites, all equipment is available for use, but remaining equipment may be in a poor condition. An average percentage has been used to calculate availability, but other factors may have been taken into account when assessing condition. All these factors will have influenced the overall rating.

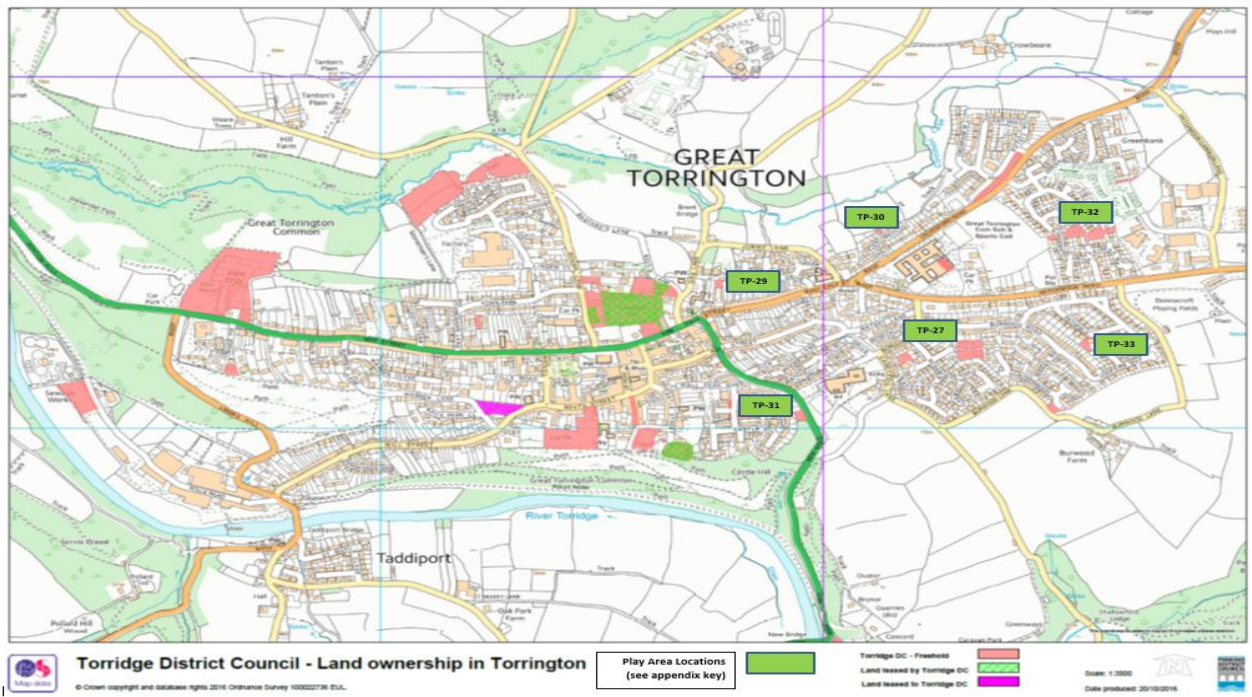
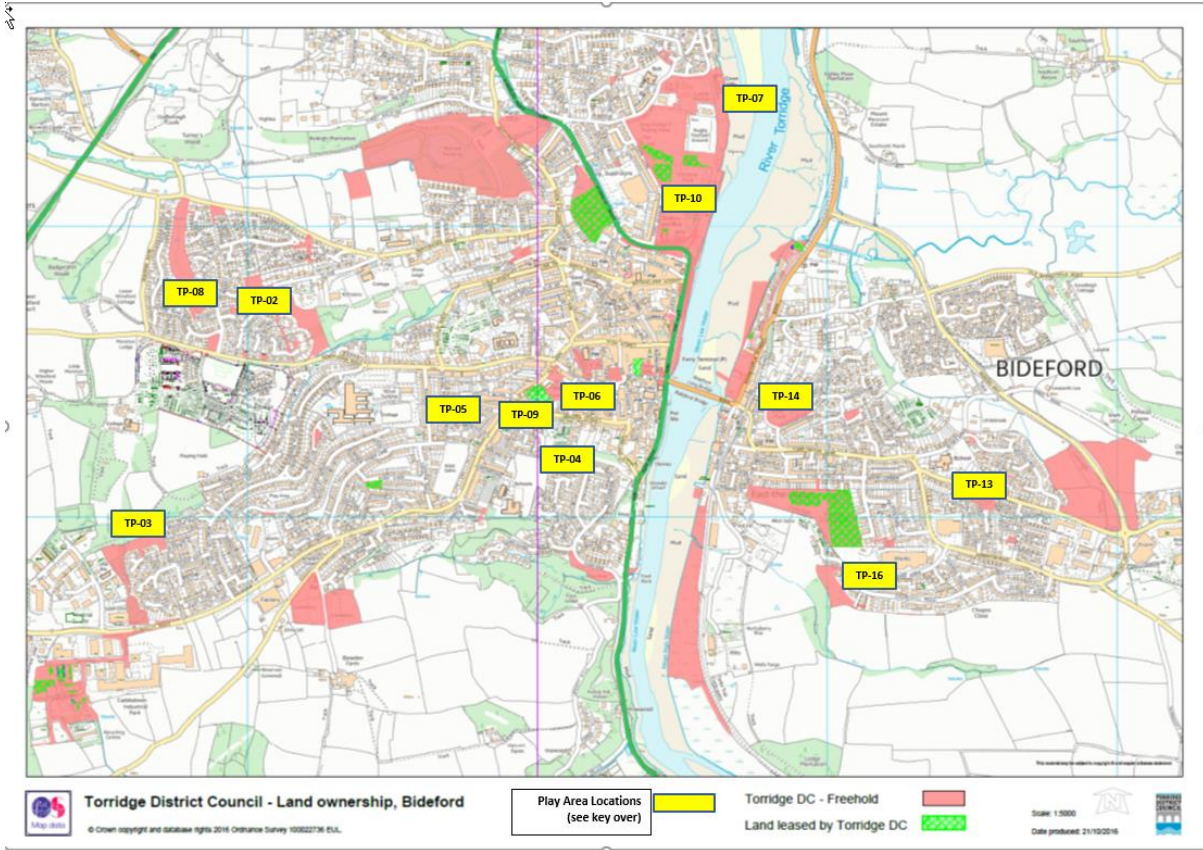
Summary of Play Condition Survey (PCS, September 2019)

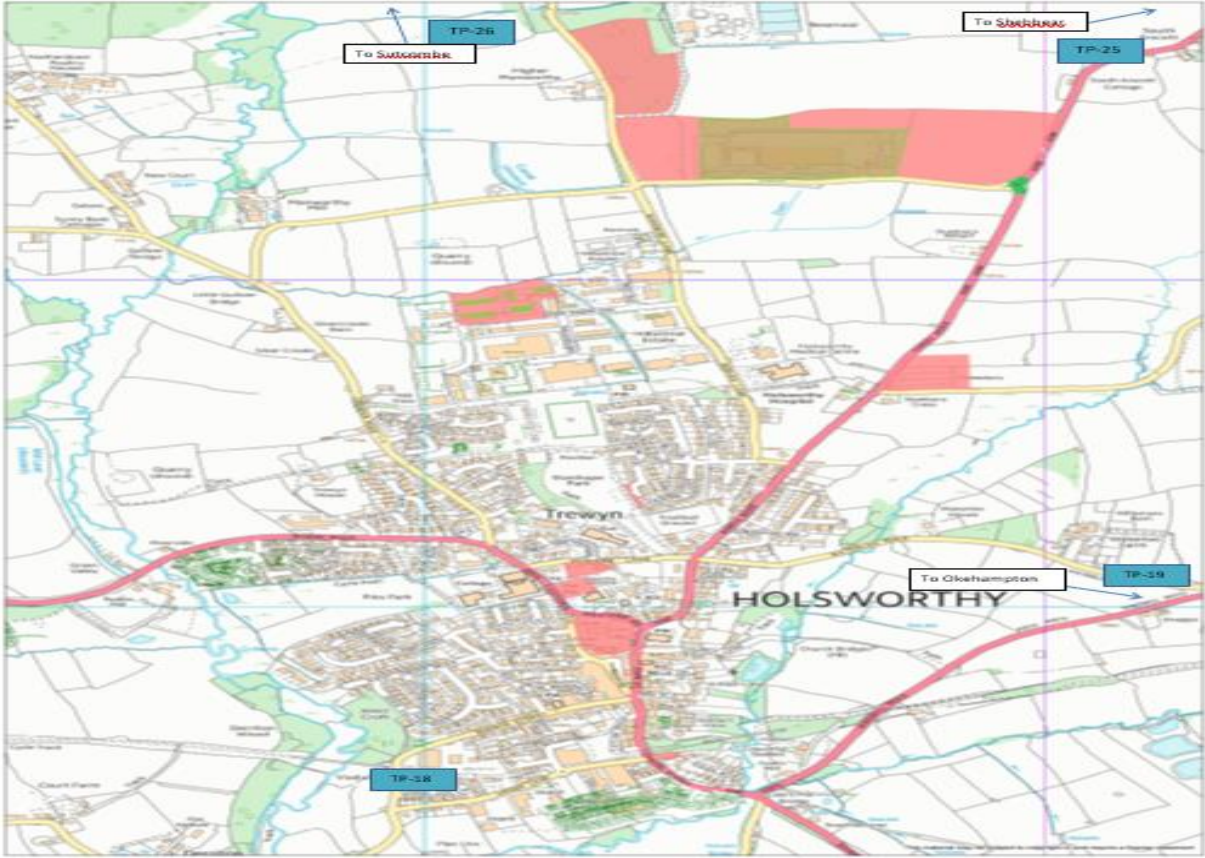
Introduction

Torrige District Council contracted Tivoli (grounds maintenance provider) to audit the condition of all Torrige District Council play areas.

The purpose of the PCS is to consider the current status of all Torrige District Council play areas and aims to identify the following detail: -

- Maps showing the location of each play area within Torrige (only 22 sites shown in this PAS)
- Inventory data for each location
- Survey condition of current equipment
- Provide a summary of current issues and planned works
- Identify key priorities for repair
- Document percentage of available play areas and voids
- Identify priorities for capital funds investment





Play Area Locations
[see appendix key]



I

Torridge Play area inventory

Scoring

Sites have been placed into one of four categories, Poor, Requires Improvement, Good or Excellent. The definition for the ratings used in this report can be interpreted as follows: -

Definition	Percentage of equipment available	Rating
With no equipment failures, in good condition and inspiring	Between 85% to 100%	EXCELLENT
With significant equipment available and no significant failings	Between 75% and 85%	GOOD
With some failings and in need of some attention	Between 50% and 75%	Requires Improvement
With significant failings / deterioration and major investment required	0 to 50%	POOR

Please note:

An average percentage has been used to calculate availability, but other factors may have been taken into account when assessing condition.

All these factors will have influenced the overall rating and it is subjective

Results

Of 36 total sites the following ratings were achieved

EXCELLENT	1
GOOD	18
REQUIRES IMPROVEMENT	9
POOR	8

Ratings by Site (taken from Tivoli survey Sept 2019)

TP-04	Bideford	Devonshire Park
TP-10	Victoria Park 'Bidefort'	Bideford
TP-17	Hartland	Northgate
TP-18	Holsworthy	Woodland View
TP-21	Northam	Goodwood Park
TP-27	Torrington	Lower Burwood
TP-35	Westward Ho!	Golf Links Road_2
TP-39	Winkleigh	Elm Meadow
TP-01	Appledore	Churchfield
TP-02	Bideford	Bridge Plats Way
TP-03	Bideford	Chestnut Drive
TP-06	Bideford	Old Town Gardens
TP-08	Bideford	Short Close
TP-10	Victoria Park Infant	Bideford
TP-10	Victoria Park Junior	Bideford
TP-14	Bideford East	Ayres Close
TP-29	Torrington	Calf Street
TP-05	Bideford	Geneva Court
TP-09	Bideford	Union Close
TP-13	Bideford East	Alverdiscott Road
TP-16	Bideford East	Pollyfield
TP-20	Northam	Benson Drive
TP-22	Northam	Hanson Park
TP-25	Shebbear	Aish Park
TP-26	Sutcombe	St Andrews Close
TP-27	Torrington	Burwood Infant
TP-27	Torrington	Burwood Juniors
TP-30	Torrington	Calvesford Close
TP-31	Torrington	Castle Hill Gardens
TP-33	Torrington	Pathfield
TP-35	Westward Ho!	Golf Links Road_1
TP-38	Westward Ho!	Village Green
TP-40	Winkleigh	Westcots Drive
T03-017	Bideford	Buckleigh Grange
7-001	High Bickington	Fountain Fields
TP-32	Torrington	Kingsmead Drive

Brief Summary of Findings

The play condition survey identified a number of consistent findings: -

Resurfacing Strategy

Many of the play areas have been equipped with safety matting which is of old type and should be considered for replacement to eliminate trip hazards. The quality of surfacing throughout the locations is diverse but mostly towards poor and requiring replacement.

Fabrication Works

A significant number of items have reached the end of their usable life and historically have been repainted. Although on the surface they appear to be in good condition there are a number of fabrication issues which are now coming to light – the majority of these are identified and monitored but there are likely to be more.

Fencing Works

A number of play areas were designed with wooden perimeter fencing which is reaching the end of its life. Those which were installed with more modern bow top style fencing are considered to be better quality. It would be worth investment in a fencing strategy. Recent changes in legislation suggest that in some areas a fence is no longer a requirement and, in these cases, where there is deterioration, ongoing repairs have not taken place and fences have been removed – examples of this are Victoria Park Juniors and Ayres Close, Bideford.

Street Furniture

There is a huge variation in the types of street furniture used across the district, particularly benches and litter bins. It is expected that different schemes will have produced different designs historically but there is now an opportunity to introduce a standard and use this as an opportunity to be more sustainable. For example, through installing furniture made from recycled material and recycling bins alongside standard bins where appropriate to do so.

End of Life

A significant number of items have now reached the end of their useful life. Unfortunately, it is likely that these will coincide with each other requiring significant investment in all areas. Consideration should be given to the high priority items recommended in the report.

Section 3

What does Torridge aim to do?

The Play Area Strategy outlines a plan to upgrade, replace or transfer all playgrounds. Although the council will aim to maintain and upgrade all of its sites to the best possible standard that finances can allow, it is also a consideration that priority will be to focus on those larger sites that accommodate more usage, supporting local families and tourists.

Torridge District Council will aim to engage with local communities including those with small or no play areas, as well as the flagship sites.

As a Council, we also recognise the importance of quality over quantity. It may be that some play areas are best being managed by other organisations and local communities to ensure that the main aims of safety and enjoyment of a play area are upheld.

Torridge District Council will work in collaboration with and alongside other organisations and partners to ensure that the highest quality of play provision is available. This includes various departments within Torridge District Council working closely together to establish a clear plan of developing new play areas and maintaining the current areas.

These departments will include: Economic Development, Planning, Property and Procurement and Finance.

Working group

It is important that various officers from within Torridge District Council work collaboratively in order to provide the best play areas for the Torridge community as financially possible.

This group will include elected members and various teams including Economic Development, Planning, Property and Finance. This group will also work closely with its external partners such as various trusts/charities and housing providers.

The Council aims to provide play areas that:

- offer and encourage play experiences that promote independence for people of all abilities
- are sympathetic to the surrounding area and neighbourhood
- maintain a connection to nature where possible
- promote intergenerational use
- provide a connection to the community. Communities will be engaged prior to all significant playground upgrades, by ways such as public consultations and meeting with local school children, in order to ensure their needs are met.

The Council also aims to:

- Continue to recognise the importance of play and utilising our open spaces
- Provide engagement with communities when required
- Work with partners and other organisations to provide support against barriers of play
- Use Fields in Trust guidance in respect of future planning applications and developments
- Encourage community participation in fundraising and provide support where needed
- Work with estates, finance and planning as part of our capital programme
- Consider the effects of Covid-19 pandemic on individuals' health and well being

We will base our approach on:

Design for Play: a guide to creating successful play spaces published in August by Play England, the Department for Children, Schools and Families and DCMS. It provides ideas and practical resources for building new play spaces in a fresher and more inspiring manner. The guide, supported by CABI Space, advocates a fresh design-led approach to commissioning, based on 10 principles and encapsulated in one golden rule: a successful play space is a place in its own right, specially designed for its location, in such a way as to provide as much play value as possible. The approach asks practitioners to imagine a play space that is:

- 1 Designed to enhance its setting — successful play spaces are designed to fit their surroundings and enhance the local environment, complementing attractive spaces and enhancing poorer environments.
- 2 Located in the best possible place — successful play spaces are located carefully ‘to be where children would play naturally’. While children often enjoy feeling as if they are away from adult view, there is a fine balance between a space that is pleasantly secluded and one that is remote and hidden away.
- 3 Close to nature — grassy mounds, planting, logs and boulders can all help to make a more attractive and playable setting for equipment, and planting can also help attract birds and other wildlife to bring the play space to life.
- 4 Designed so that children can play in different ways — successful play spaces can be used in different ways by children and young people of different ages and interests; they can also be important social spaces for parents and carers, as well as for children.
- 5 Geared towards encouraging disabled and able-bodied children to play together — children with different abilities can play together in well-designed play spaces, and parents and carers who are themselves disabled should be able to gain access to play spaces if they are to accompany their children.
- 6 Loved by the community — a successful community engagement process will help create a site that the community likes, and which meets its needs.
- 7 Where children of all ages play together — good play spaces avoid segregating children based on age or ability and are laid out so that equipment and features can be used by a wide range of children.
- 8 Designed to enable children to stretch and challenge themselves in every way — Children and young people need opportunities to experience challenge and excitement in their play.
- 9 Maintained for play value and environmental sustainability — good play spaces are designed and constructed using sustainable materials and maintained to encourage different play experiences.
- 10 Flexible and able to evolve as the children grow — Building some ‘slack space’ into the layout. Areas with no predefined function can help introduce the potential for change and evolution.

Priorities for improvement

Current play area ratings as of October 2020

Code	Town	Play Area & Colour rating	Date Rating received
TP-04	Bideford	Devonshire Park	Jul – Sept 2019
TP-10	Victoria Park 'Bidefort'	Bideford	Jul – Sept 2019
TP-17	Hartland	Northgate	Jul – Sept 2019
TP-18	Holsworthy	Woodland View	Jul – Sept 2019
TP-21	Northam	Goodwood Park	Jul – Sept 2019
TP-27	Torrington	Lower Burwood	October 2020
TP-35	Westward Ho!	Golf Links Road_2	Jul – Sept 2019
TP-39	Winkleigh	Elm Meadow	Jul – Sept 2019
TP-01	Appledore	Churchfield	October 2020
TP-02	Bideford	Bridge Plats Way	Jul – Sept 2019
TP-03	Bideford	Chestnut Drive	Jul – Sept 2019
TP-06	Bideford	Old Town Gardens	Jul – Sept 2019
TP-08	Bideford	Short Close	Jul – Sept 2019
TP-10	Bideford	Victoria Park Infant	Jul – Sept 2019
TP-10	Bideford	Victoria Park Junior	Jul – Sept 2019
TP-14	Bideford East	Ayres Close	Jul – Sept 2019
TP-29	Torrington	Calf Street	October 2020
TP-05	Bideford	Geneva Court	Jul – Sept 2019
TP-09	Bideford	Union Close	Jul – Sept 2019
TP-13	Bideford East	Alverdiscott Road	Jul – Sept 2019
TP-16	Bideford East	Pollyfield	Jul – Sept 2019
TP-20	Northam	Benson Drive	Jul – Sept 2019
TP-22	Northam	Hanson Park	Jul – Sept 2019
TP-25	Shebbear	Aish Park	Jul – Sept 2019
TP-26	Sutcombe	St Andrews Close	Jul – Sept 2019
TP-27	Torrington	Burwood Infant	Jul – Sept 2019
TP-27	Torrington	Burwood Juniors	Jul – Sept 2019
TP-30	Torrington	Calvesford Close	Jul – Sept 2019
TP-31	Torrington	Castle Hill Gardens	Jul – Sept 2019
TP-33	Torrington	Pathfield	Jul – Sept 2019
TP-35	Westward Ho!	Golf Links Road_1	Jul – Sept 2019
TP-38	Westward Ho!	Village Green	Jul – Sept 2019
TP-40	Winkleigh	Westcots Drive	Jul – Sept 2019
T03-017	Bideford	Buckleigh Grange	Jul – Sept 2019
7-001	High Bickington	Fountain Fields	Jul – Sept 2019
TP-32	Torrington	Kingsmead Drive	Sept 2020
	Bideford	Skate Park	October 2020

Proposed Play Area Development commitment from Torridge District Council

Priorities for investment

Investment into play areas is dependent upon the availability of funds as part of Torridge District Council's Capital Funds. As such it is essential to ensure that there are clear ambitions for where investment should be targeted.

These should include:

- Ensuring that all play areas are rated 'good' or above
- Key sites. Torridge District Council recognise that these play areas play a major part in local provision for communities and visitors
 - Victoria Park, Bideford
 - Churchfields, Appledore
 - Calf Street, Torrington
 - Westward Ho! Green

Protecting current play areas

The North Devon and Torridge Local Plan 2011-2031 provides safeguards through Policy DM09 to ensure that open space (including existing play spaces) are not re-developed for other uses without alternative provision being provided in an appropriate sustainable location; the exception being where a small element of an open space is redeveloped to provide a justified enhancement to the remainder.

Future funding for play areas

There is no dedicated funding for children's play areas from government. It is up to each Local Authority to allocate limited resource into providing and maintaining play facilities. Economic resources for funding new projects in local government is limited and therefore authorities like Torridge District Council have to prioritise funding they have available. A significant amount of money is invested in health & safety and maintenance with little funds available for new provision.

Grants are non-repayable funds that enable voluntary and community organisations to provide services or activities. Match funding and possible Crowdfunding schemes providing amplification of Torridge District Council councillor grant spending. This could be adopted in a more strategic way to enable Councillor grants to go further and also to ensure lasting impact and value for money.

Current Score	Priority	Time scale to make 'good' standard	Time scale to make excellent
Poor	Urgent	By January 2023	By January 2031
Requires Improvement	High	By January 2023	By January 2031
Good	Low	N/A	By January 2031
Excellent	None	N/A	N/A

The aspiration of Torridge District Council is to support plans to have all play areas in an excellent condition by October 2031. Please note this is a commitment to support where possible and not necessarily to directly fund each play area with Capital Funding. There will be a certain expectation of community ownership of which Torridge District Council will support as per the asset transfer process below.

We know from certain examples, such as play areas in Northam, that when certain assets are handed back to other organisations, such as Town Councils, that future maintenance and development is often of a higher standard than Torridge District Council can realistically provide.

In these situations, the asset transfer process could be considered. However, this decision will not be taken lightly, and this can only happen if the council is confident that all points of the asset transfer policy are deemed certain to take place.

Torridge District Council may identify play areas that may benefit further from being owned by a different organisation such as a Parish or Town Council

The Council is fully supportive of Community Transfers and has set up a process to consider all approaches from the Community in a clear and transparent manner.

- Asset transfer should only take place where it can realise social or community benefits, without risking wider public interest concerns
- The benefits of community ownership of assets can outweigh the risks involved, in appropriate circumstances
- Risks can be minimised and managed by drawing on the experience of others

Maintenance Provision

Maintenance and investment will be dependent on Torridge District Council's Capital Programme and stated priorities for investment. Torridge District Council and Council members are to agree on a maintenance budget and how this will be protected, prior to adoption of this strategy.

Torridge District Council holds a general maintenance budget where funds required for replacing broken items and parts, decoration and general upkeep can be taken.

Replacement of larger items that have come to end of life will require capital investment from a separate source.

***amended following Full Council resolution (minute 10) 14th June 2021**

Grant Funding – Supporting our communities

There are over 4,000 grant funders in the UK, and the process is highly competitive. Links to the extensive list of funders are available at: <https://mycommunity.org.uk/>

The following projects in the Torridge District have been provisioned with the help of grant funding via local community groups:

- Kingsmead Drive, Torrington
- Burwood Play Area, Torrington
- Calf street Play Area, Torrington

Crowdfunding

Crowdfunding is a method of raising capital through the collective effort of friends, family, customers, and individual investors. This approach taps into the collective efforts of a large pool of individuals—primarily online via social media and crowdfunding platforms—and leverages their networks for greater reach and exposure.

Covid-19 addendum, 2020

The COVID pandemic has made us all aware of the importance of having open spaces in which to isolate, exercise and play.

Exercise and play have been a key factor in lockdown regulations and has proved invaluable to everyone's health and wellbeing. So much so, the government recognised the importance of keeping play areas open in subsequent lockdowns in 2021.

In May 2020, the Associate for Play Industries (API) said *"it fully appreciates the priority is preventing COVID-19 spreading further throughout the population and supports the current closures of playgrounds and outdoor gyms in this first stage of relaxing the lockdown measures. The welfare of children is paramount in this crisis and whilst the priority is, of course, their safety, it is alarming that children's right to play freely outdoors has not received any government attention. Playgrounds are a keyway in which children will be able to heal from the effects of lockdown."*

Unfortunately, Councils across the UK have had to restrict access to playgrounds on government advice to prevent further risk. This has proved unpopular but necessary.

Whilst cooperative play amongst young children is crucial in their development stages, we need to be mindful that provision for other play may also need to be accommodated, particularly in a pandemic situation. This strategy needs to be fully developed but could be as simple as providing two single swing sets, where space allows, instead of sharing a traditional pair of swings and using antiviral paint. The world as we know it is changing. Could this be the end of the traditional playground that we've all grown up with?

We don't yet know how this will affect our strategy, but we acknowledge this is an important development and Torridge District Council will consider the effects of the current situation and will use government guidance and develop the new way forward.

Appendices

- 1.1 Green Infrastructure Strategy – part 1
<https://www.torridge.gov.uk/CHttpHandler.ashx?id=13536&p=0>
- 1.2 Green Infrastructure Strategy – part 2
<https://www.torridge.gov.uk/CHttpHandler.ashx?id=13537&p=0>
- 1.3 Green Infrastructure Strategy – part 3
<https://www.torridge.gov.uk/CHttpHandler.ashx?id=13538&p=0>

- 2.0 Northern Devon Play Pitch strategy
<https://www.torridge.gov.uk/CHttpHandler.ashx?id=18262&p=0>

- 3.0 Friends of the Earth
<https://policy.friendsoftheearth.uk/insight/englands-green-space-gap>